

SOUND ANCHOR MAGNEPAN MG 20 STAND INSTRUCTIONS

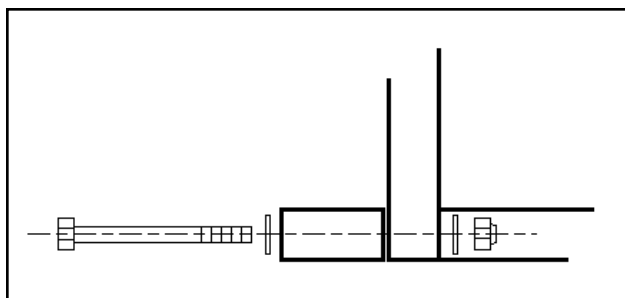


figure 1

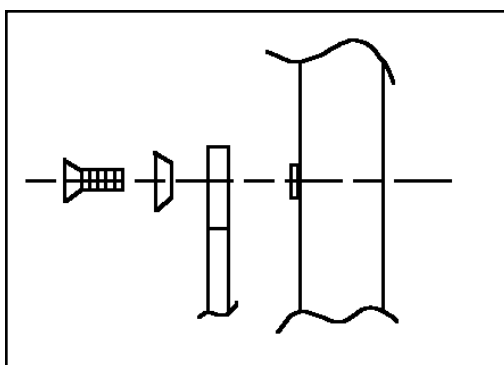


figure 2



SOUND ANCHORS MAGNEPAN INSTRUCTIONS

Thank you for purchasing Sound Anchor Stands for your Magnepan 20/20.1 Loudspeakers. These instructions are intended to help guide you through the assembly process.

Inventory

- 2 ea. Uprights
- 2 ea. Bases
- 6 ea. Spikes
- 6 ea. 3/8-16 Jam Nuts
- 6 ea. 3/8 flat washers
- 4 ea. Turnbuckles
- 8 ea. 1/4-20 x 5/8" flat head socket cap screws
- 8 ea. 1/4" special washers
- 4 ea. 5/16 x 3 1/2" hex head cap screws
- 4 ea. 5/16-18 nyloc nuts
- 8 ea. 5/16 flat washers
- 1 ea. 5/32" hex key
- 8 ea. 1/4-20 x 2 1/4 stainless phillips screws

ASSEMBLING THE STANDS

1. Check to see that you have all of the above listed parts.
2. Fasten the base and upright together using 5/16 hex screws, washers and nyloc nuts as shown in *figure 1*
3. Adjust the turnbuckles so that they are all the same length and have the same amount of thread showing at each end.
4. Install the turnbuckles using one 1/4-20 x 5/8" flathead socket screw and special washer at each end as shown in *figure 2* and the accompanying photo.
6. Adjust the turnbuckles so that the uprights are vertical
7. Install the spikes into the threaded holes on the bottom of the stand. Use 1 washer and 1 jam nut on each spike .
8. Your stands are now assembled and ready to be fastened to your speaker

PUTTING IT ALL TOGETHER

Sound Anchor Stands for Magnepan Loudspeakers are fastened to the speaker the same way that the original tee stands that were supplied with the speakers are fastened. In fact we even use the same four screws

1. Place a tablecloth, blanket or towel on top of a table which has had all objects removed from it's surface. This surface will be used to assemble your system. The cloth will protect the speaker and tabletop from each other.
2. Set your speaker panel face down on your prepared surface with at least 1" of the bottom edge of your panel extending beyond a table edge.
3. Fasten the stand to the speaker at the points shown on *figure 3* using the 1/4-20 x 2 1/4 screws. Tighten snugly but do not over tighten as over tightening may damage the threaded inserts or screws.

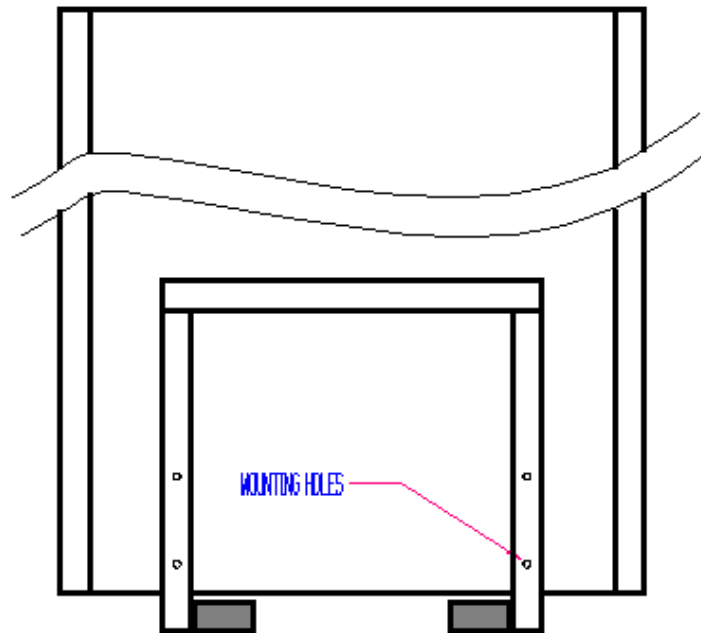


figure 3

SETTING THEM UP

1. Place your speakers (which have been fastened to your stands) where you will want them for listening.
2. Connect your cables according to your Magnepan manual.
3. Adjust the front two spikes so that your system is level side to side.
4. Adjust the turnbuckle so that your speakers are straight up vertical (you may want to use a level or plumb bob to check this)
5. Sit in your listening position and listen to some familiar music.
6. After you are satisfied that you have adjusted to the sound enlist a friend to help adjust speaker angle.
7. From your listening chair direct a friend or assistant to change the angle of your speakers by turning the turnbuckles 2 turns at a time. We have achieved best results by tilting the panel forward 5 to 10 turns. As you tilt the speaker forward the image specificity and focus usually improves until you get about 5 degrees of forward tilt out of the system.
8. Make sure that both speakers have the same angle. You can do this by measuring the overall length of the turnbuckles. When all four are the same the angles are the same. *See figure 4*
9. Sit back and enjoy.

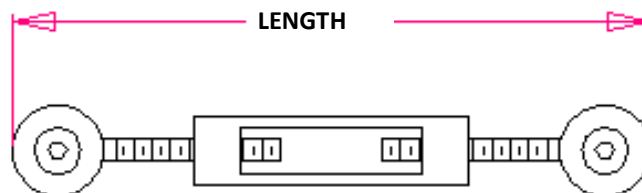


figure 4