

# Sound Anchors LCD Stand Instructions



Sound Anchors

2835 Kirby Cir NE Unit 110

Palm Bay, FL 32905

321-724-1237 [Office@soundanchors.com](mailto:Office@soundanchors.com) [www.soundanchors.com](http://www.soundanchors.com)

## Sound Anchors LCD Stands

The Sound Anchors LCD Stand is the ultimate solution for supporting flat panel monitors and televisions in places where you do not have a column of wall for mounting. The Sound Anchors LCD Stands feature continuous height adjustment. They are equipped with the Redmount Mounting System which allows your monitor to be tilted up or down and pan right or left.

Sound Anchors LCD stands come in three sizes:

LCD1 – The LCD1 is the most compact size. They are designed to support monitors from 12 to 30 inches. They have the same base and upright as the ADJ1 speaker stand with base dimensions of 14" wide by 17" deep and standard maximum adjustable height of 44". There is also an attachment to increase the height by about 14" as seen in the image below.

LCD2 – The LCD 2 Stand is a larger version of the LCD1 Stand. They are designed to support monitors from 12 to 38 inches. They have the same base and upright as the ADJ2 speaker stand with base dimensions of 17" wide by 23" deep and standard maximum adjustable height of 44" or 56". There is also an attachment that will increase the height by about 14" as seen in the image below.

LCD3 – The LCD3 stand is designed to support monitors from 12 to 38 inches and uses the same base and uprights as the Plasma Stand. The Base dimension can vary depending on the space available in your application. The Bases on the LCD3 stands are typically 36" wide or more to compensate for the taller upright used. The standard uprights for the LCD3 stand are 60" and 72". The build is different than that of the LCD1 and LCD2 stands.



Bar Attachment to extend height of LCD1 and LCD2 Stands.

## Hardware:

The hardware for the LCD1 and LCD2 are identical. The LCD3 stands use a slightly different hardware list as shown in the diagrams below.



### LCD1 and LCD2 Hardware:

- 1 ea 7/16-14 x 2.5" Socket Head Screw
- 1 ea 7/16 Black Hardened Washer
- 2ea 7/16-14 x 1" Flat Head Screws
- 4ea Twin Wheel Caster
- 1ea 3/8 Hex Wrench
- 1ea 1/4 Hex Wrench
- 1ea 5/32 Hex Wrench



### LCD3 Hardware:

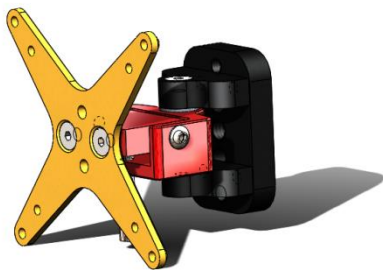
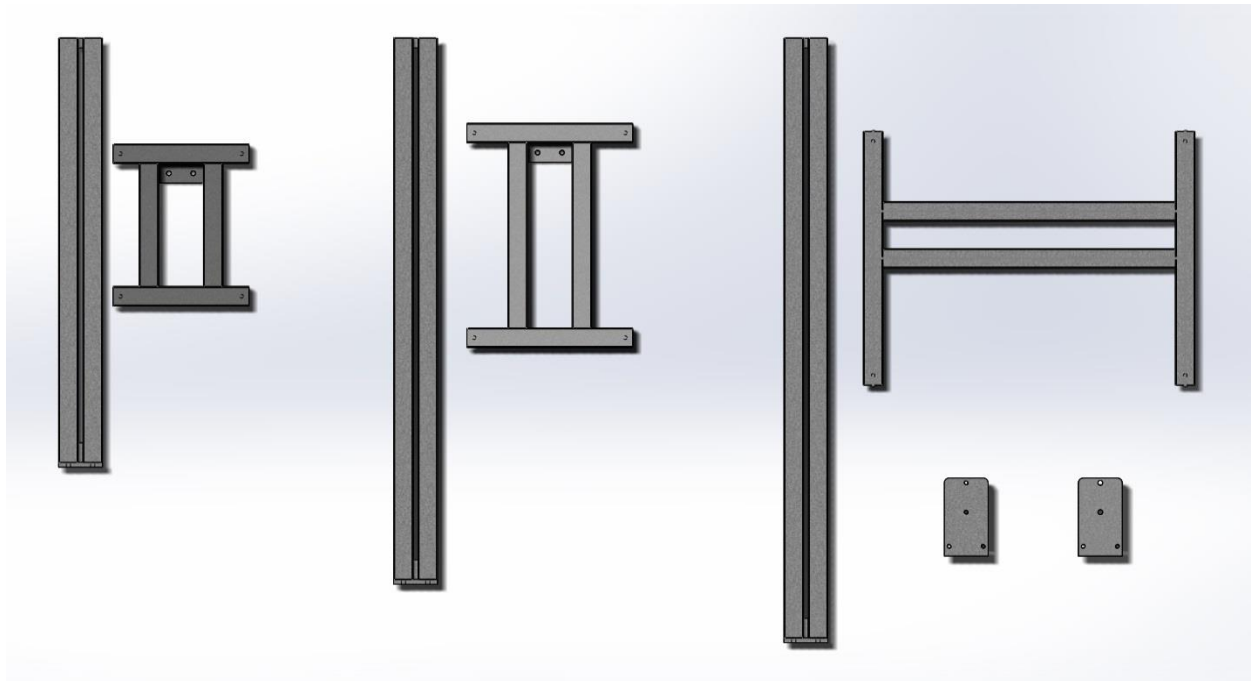
- 5 ea 7/16-14 x 2.5" Socket Head Screw
- 2 ea 7/16-14 x 3" Socket Head Screw
- 7 ea 7/16 Black Hardened Washer
- 4ea Twin Wheel Caster
- 1ea 3/8 Hex Wrench
- 1ea 5/32 Hex Wrench

## Sound Anchors LCD Stand Part Lists

LCD 1

LCD 2

LCD 3



All LCD stands come with a Red Mount VESA mount as well as the previously mentioned parts.

These parts lists are for the "standard" versions of the LCD stands. The LCD1 and LCD2 can use custom sized uprights and attachments to increase the adjustability range. There are also extension arms available for different applications. The LCD3 can have a custom sized base as well as upright. For any customized needs or inquiries, feel free to contact us at 321-724-1237 and ask to speak to Bernie or Mark. We are more than happy to talk through what you may need to work for your specific application.

## Assembly LCD1 and LCD2:

1. Fasten the base to the upright using 2ea 7/16-14 x 1 Flat Head Cap Screws as shown in Figure 1.

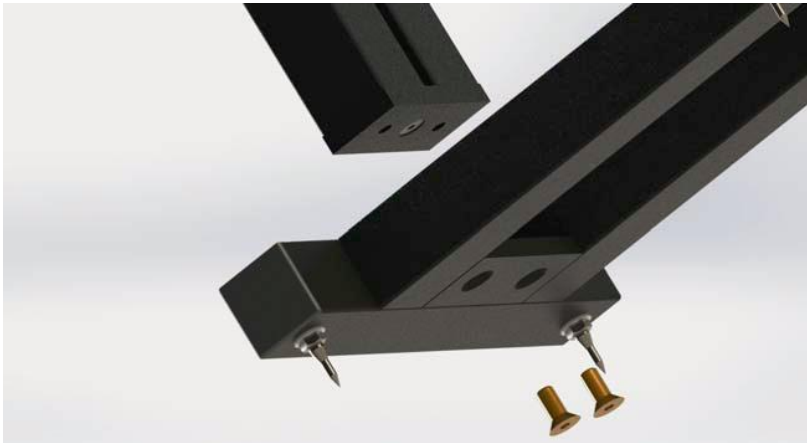


Figure 1

2. Install spikes, washers, and jam nuts into the four threaded holes in the stands base. Insert the spike so that there are 1 or 2 threads visible after the jam nuts are set. JAM NUTS ARE FINGER TIGHTEN ONLY. NO TOOLS.
3. Attach the Red Mount VESA Mount using one 7/16-14 x 2.5 Socket Head Cap Screw and one 7/16 Black Hardened Washer, as shown in Figure 2. This is also the bolt you will use to adjust the height of your monitor.



Figure 2

4. All that is left is to level your stand. Whether you have spikes, or casters, use a magnetic level on the face of the upright and adjust your feet until they are set with your stand leveled.
5. Some monitors may require you to attach the Red Mount VESA mount first, followed by attaching the entire monitor and mount as one piece onto the upright.

### Assembly LCD3:

1. Fasten the base and the 2 mounting plates using 2ea 7/16-14 x 2.5 Socket Head Cap Screw and 2ea 7/16 Black Hardened Washer for each mounting plate, as shown in Figure 3.

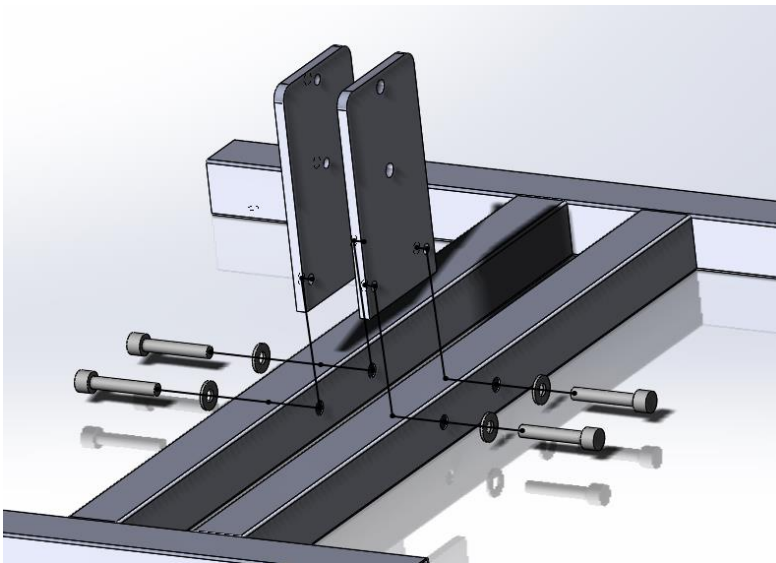


Figure 3

2. Attach the Upright to the base by using 2ea 7/16-14 x 3 Socket Head Cap Screws and 2ea 7/16 Black Hardened Washers through the 2 mounting plates, as shown in Figure 4.

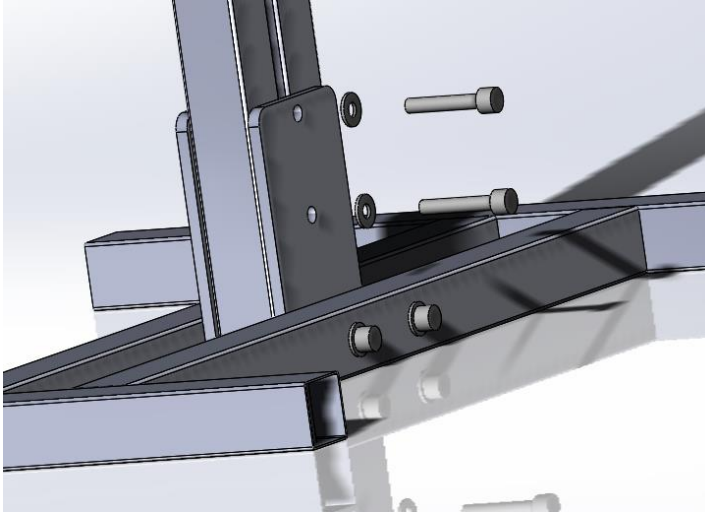


Figure 4

3. Attach the Red Mount VESA Mount using one 7/16-14 x 2.5 Socket Head Cap Screw and one 7/16 Black Hardened Washer, as shown in Figure 5. This is also the bolt you will use to adjust the height of your monitor.



Figure 5

4. All that is left is to level your stand. Whether you have spikes, or casters, use a magnetic level on the face of the upright and adjust your feet until they are set with your stand leveled.
5. Some monitors may require you to attach the Red Mount VESA mount first, followed by attaching the entire monitor and mount as one piece onto the upright.

## **LCD Stand**

Sound Anchors LCD stands are the perfect way to get your monitors in the air, especially if you don't have a wall to put them on. They are available with casters and are therefore mobile, they have total adjustability within the bounds of the upright, and they are sturdy when used with the right application. The LCD1 and LCD2 are designed after our rigid Studio Adjustable Stands. They are heavy, and won't budge. The LCD3 is designed similarly to our Plasma Stand. They are perfect when you need a wider base to support a larger TV. Thank you again, for choosing Sound Anchors to really bring out your video equipment.